



INTERNATIONAL CHILD FOUNDATION, Inc.

Hague Accredited, Licensed & Non-Profit Adoption & Home Study Services

Toll Free 877 542-8813
Phoenix 480 751-1015
Tucson 520 531-9931
EFax 760 682-2832
24/7 Cell 520 906-2892

China Adoption	Guatemala Adoption	Haiti Adoption	Kazakhstan Adoption	Korea Adoption
Kyrgyzstan Adoption	Philippines Adoption	Mexico Adoption	Vietnam Adoption	USA Adoption

How do I start?
Application
Home Study
Adoption Planning
USCIS Instructions
Seminars
Adoption Education
Adoption Education
Recommended Reading
Adoption MDs
Resource Links
About Us
Founders & Staff
ICF News
ICF Policies
Post Adoption
Refund Policy
Grievance Policy
Special Programs
Hosting Programs
Orphan Aid
Contact
Email Us

China Adoption & International Child Foundation

Sept 10, 2009 ~ This general China adoption program is closed; however, for families interested in special needs adoption, we can assist with adopting from China through Adoptions Together in Baltimore, MD. Please contact us for more information.

January 22, 2009 ~ Program is on hold; contact us for information.

China adoption, as most of you are aware, has become a very long process. As of fall 2008, the estimate is at about 3.5 years to referral. In the case of special needs children the wait is much shorter.

International Child Foundation works through Adoptions Together International, in MD, for the placement of Chinese orphans. Currently, due to changes in parent eligibility and the long referral time frames, we are not working to place children from China. We continue to provide home studies for China adoptions. An overview of China adoption follows.

Throughout China, families leave infant daughters anonymously in baskets where they are found and taken to orphanages. Traditionally, sons are needed to support parents in their old age. Thus with restrictions on family size, Chinese parents sadly and secretly relinquish their baby daughters so that they might have a son to carry on their lineage and help them in their elder years.

Most children adopted are infants, referred to families at about 6 months of age. Medical profiles include vaccinations and medical tests. All children are ethnic Chinese.



Married couples with both parents under the age of 44 are preferred to adopt infants under 12 months. Older parents may qualify to adopt toddlers and older children; please contact your placing agency for more information. All parents may consider adopting special needs children. Singles are no longer permitted to adopt infants from China.

US families must have no more than four children living in the home and joint income must exceed \$10,000 per individual, including the child to be adopted. (If there is a husband, wife and two children, plus the child to be adopted, household income must exceed \$50,000.)

The home study for China is very specific. ICF is skilled at China home studies, and we can assist families adopting from China through ICF or any other agency. One of our Tucson case managers is adopting from China currently.

ICF works with families adopting from China through many agencies, including Adoptions Together, Great Wall, CCAI and Children's Home Society & Family Services. We are happy to assist with home studies, post placement reports and adoption education. Please contact us for more information about home studies, post placement services and about China Heritage tours.

We look forward to helping with your adoption. Your questions are always welcome.

International Child Foundation Adoption & Home Study Services

Application Fee: \$300

Home Study: ICF Home Study Fee is \$1,000; or as set by your home study agency

USCIS Fees: I-600A fee is \$750 for applicant, including one set of fingerprints; additional fingerprints are \$80 per adult

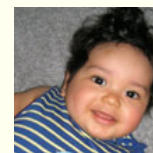
Agency Fee: \$6,200 total; this is broken into two payments; the 1st is \$2,800 and is due with the adoption agreement; the 2nd payment is due with the dossier

Fees paid with submission of Dossier

2nd payment Agency Fee: \$3,400

Dossier Certification: Approx. \$650 for 13 documents @ \$50 each

Children who found their Forever Families



BLAS & CCAA Registration Fees: \$465

Translation Fee: \$500

Fees paid upon acceptance of Referral

Foreign Source Fee I: \$2,500

Post Placement Translation Fee: \$100 for 3

Post Placement Pre-Payment Deposit: Made to ICF or to Home Study provider

Fees paid in China

Foreign Source Fee: \$1,500 (paid in cash in Province)

Orphanage Humanitarian Aid Fee: \$5,000 approx. (paid in cash in Province)

US Embassy Fee for Child Visa: \$400 (paid in cash in Guangzhou)

US Embassy Medical Fee: \$75 (paid in cash in Guangzhou)

Gratuities for Driver & Guides: \$5 per person (collected and paid by group)

Gifts for Orphanage: \$35 per family (toward small gifts presented by group)

State Certification Fees vary from state to state; in AZ it is \$3 per document

Post Placement Fee: ICF \$300 for one child, \$350 for two; other agencies vary

Fees subject to change.

CHINA ADOPTION STORY

We adopted our daughter Holly from the Guangdong Province of China. She was 9.5 months old when we brought her home. She is the JOY of our life! Our adoption experience was exceptional. The US and overseas staff walked us through every step of the way. Our trip to China was wonderful – a small group, very personal and well organized.

Tracey, Richard & Holly German



[Home](#)

[Seminars](#)

[Programs & Fees](#)

[Advice & Planning](#)

[Application](#)

[Contact](#)